

VIDA



## VIDA BY NILA SPACES

---

Situated in the absolute heart of the city, Vida by Nila Spaces elevates style, amenity and convenience to luxurious new heights.

## LIVE @ VIDA

---

Situated in the absolute heart of the city, Vida by Nila Spaces elevates style, amenity and convenience to luxurious new heights.



*A modern-day  
masterpiece*

### *A modern-day masterpiece*

we are proud to offer unobstructed views from every apartment, ensuring a breathtaking experience for our residents. In addition, we have carefully designed each house to have its own share of greens, incorporating a sustainable green building facade that promotes environmental well-being. Furthermore, our extensive amenities span over 65,000 square feet, providing a wide range of recreational and lifestyle facilities. A standout feature is our unique state-of-the-art sky park, which covers over 18,000 square feet, offering an exceptional space for relaxation and leisure activities.





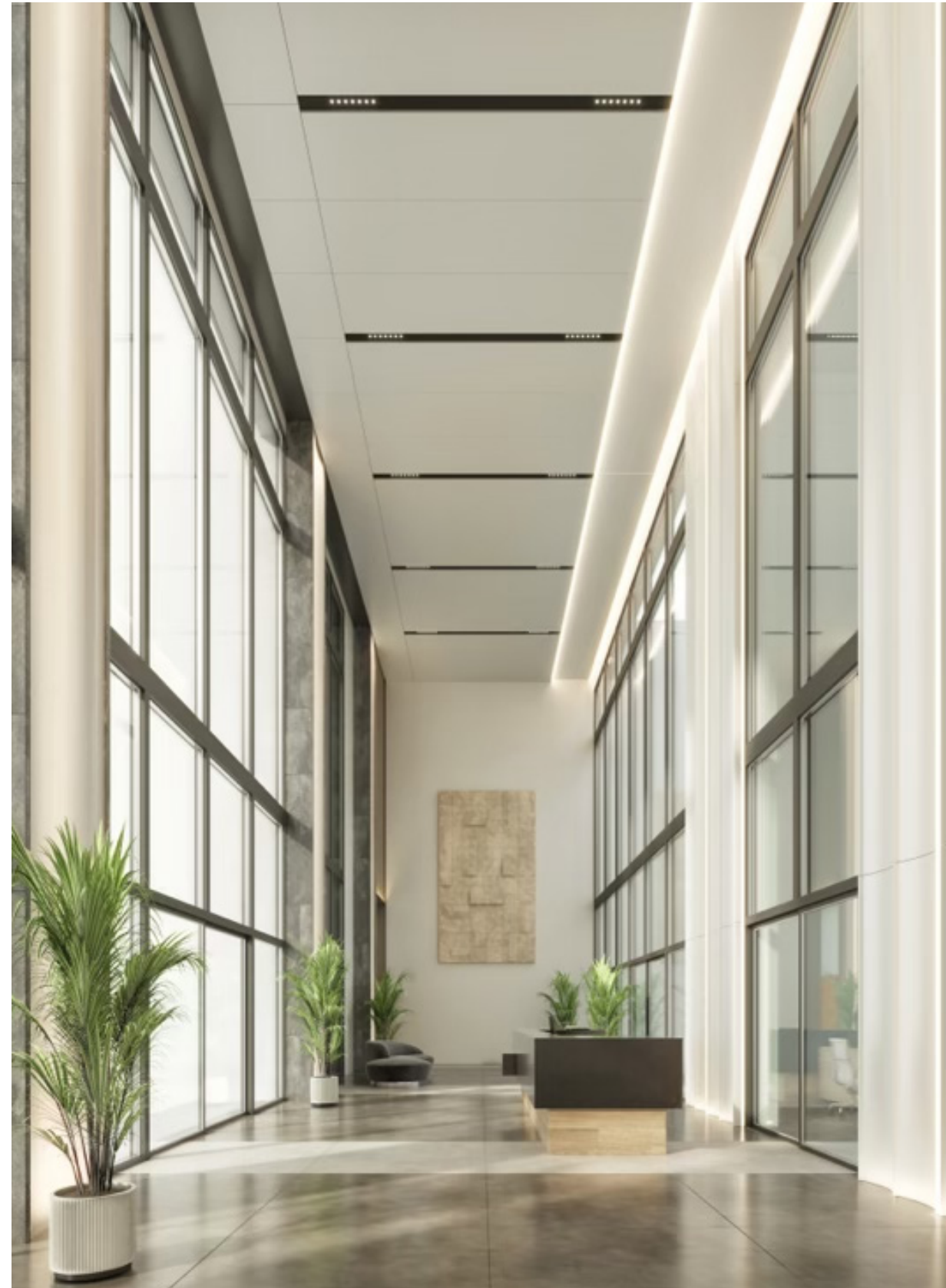
*Imagine waking up from your dreams  
only to walk through clouds.*



## WORK @ VIDA

Situated in the absolute heart of the city, Vida by Nila Spaces elevates style, amenity and convenience to luxurious new heights.





*The Future of work  
now at your doorstep.*

experience the convenience of our co-working space, designed to foster creativity and collaboration. Whether you need a dedicated workspace, a place to collaborate with others, or a quiet spot to focus, we provide all the tools you need to succeed, eliminating the need for a daily commute.



## EAT @ VIDA

---

Situated in the absolute heart of the city, Vida by Nila Spaces elevates style, amenity and convenience to luxurious new heights.





*The Future of work  
now at your doorstep.*

experience the convenience of our co-working space, designed to foster creativity and collaboration. Whether you need a dedicated workspace, a place to collaborate with others, or a quiet spot to focus, we provide all the tools you need to succeed, eliminating the need for a daily commute.



## PLAY @ VIDA

---

Situated in the absolute heart of the city, Vida by Nila Spaces elevates style, amenity and convenience to luxurious new heights.





*The Future of work  
now at your doorstep.*

experience the convenience of our co-working space, designed to foster creativity and collaboration. Whether you need a dedicated workspace, a place to collaborate with others, or a quiet spot to focus, we provide all the tools you need to succeed, eliminating the need for a daily commute.





*At Vida 'You' are at  
the heart of everything*

—— VIDA BY NILA SPACES

*Something for  
every taste, at every  
time of day*

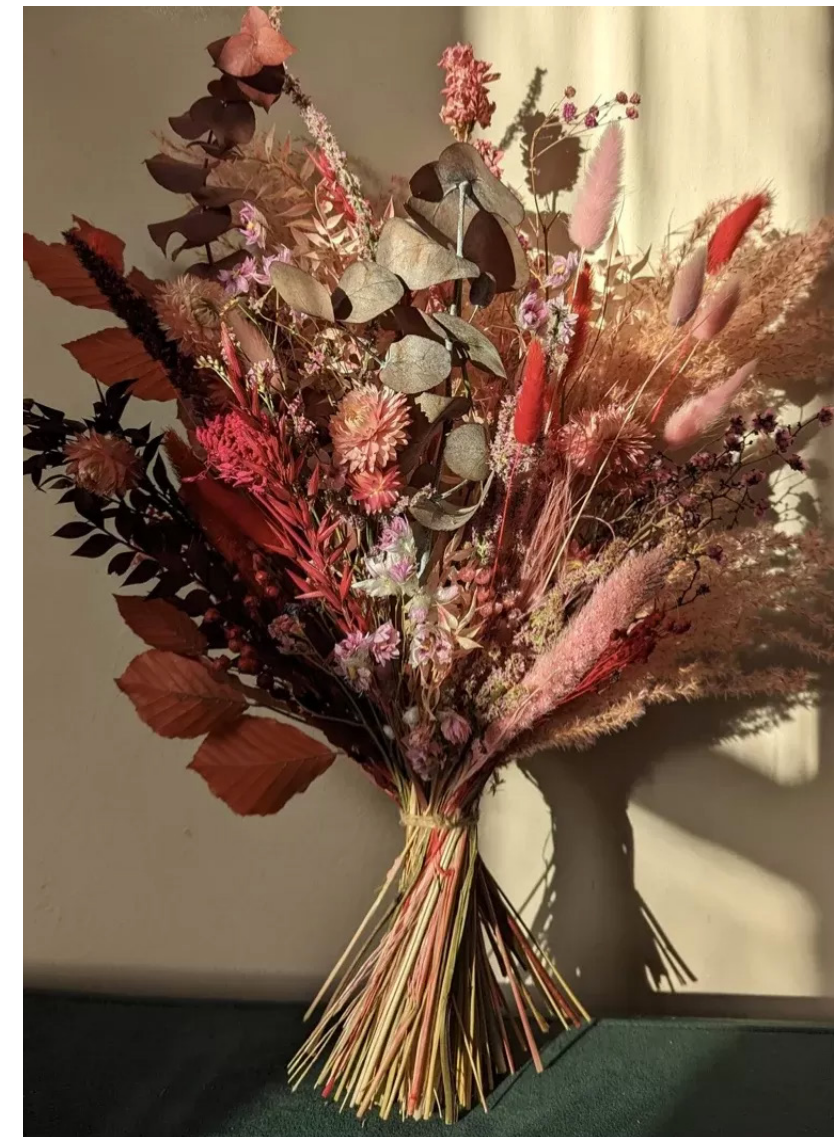
with a vision of becoming a leading global financial & technology hub, the evolution of GIFT City is an opportunity to drive reforms towards providing a thriving financial ecosystem critical to support and expand businesses. GIFT City is inclined to provide the conducive business eco-system at par or above with leading global financial hubs.

GIFT City is a project of national importance and has become an integral part of the India's growth story as the country marches towards realizing the dream of becoming a developed nation.



QUINTESSENTIALLY

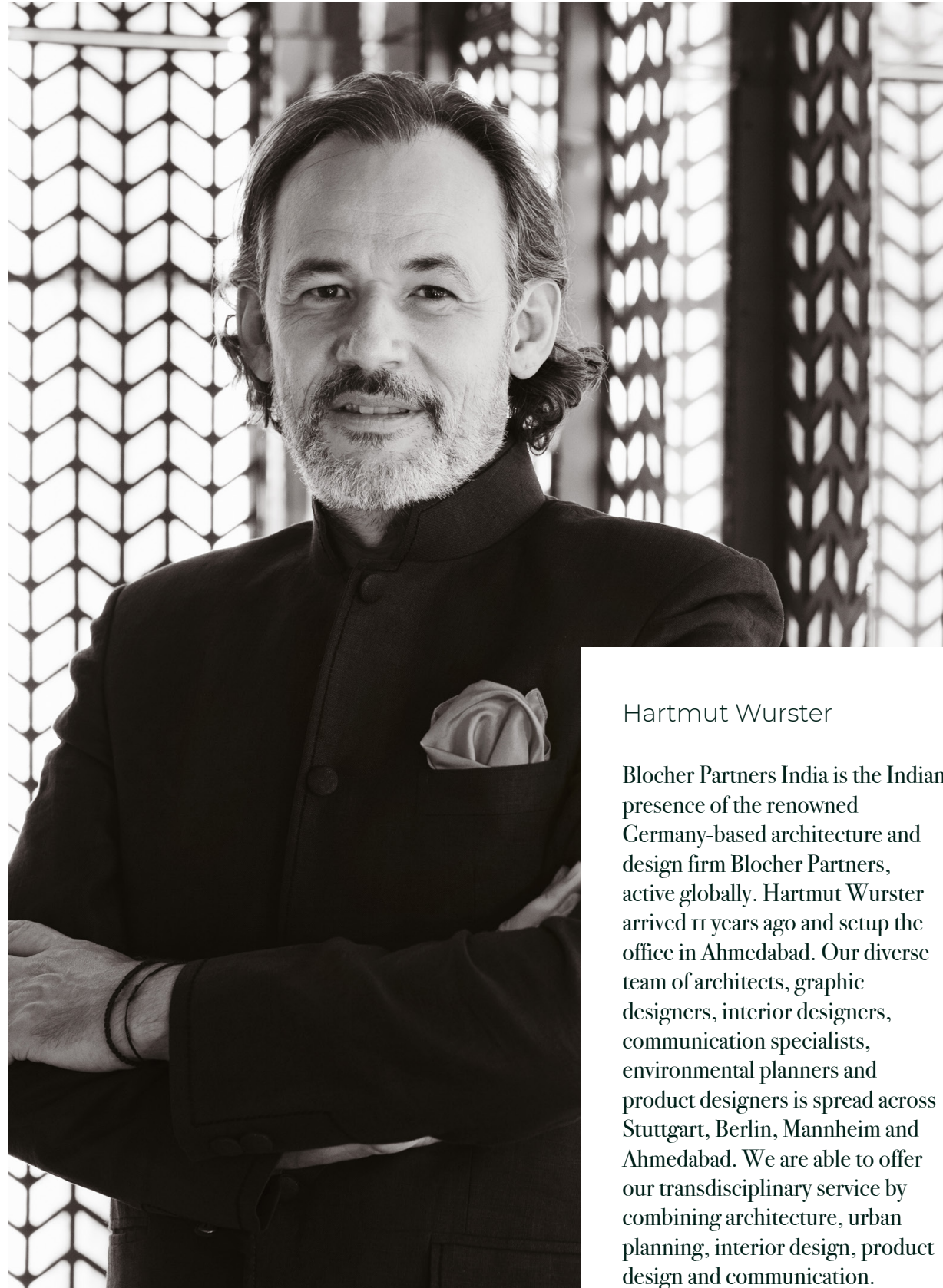




Quintessentially Lifestyle Members have access to thousands of benefits and privileges with the best hotels, restaurants, clubs, spas, luxury products and practical services across the globe.



*Designed by the acclaimed*  
**blocher partners**  
india



Hartmut Wurster

Blocher Partners India is the Indian presence of the renowned Germany-based architecture and design firm Blocher Partners, active globally. Hartmut Wurster arrived 11 years ago and setup the office in Ahmedabad. Our diverse team of architects, graphic designers, interior designers, communication specialists, environmental planners and product designers is spread across Stuttgart, Berlin, Mannheim and Ahmedabad. We are able to offer our transdisciplinary service by combining architecture, urban planning, interior design, product design and communication.

*Designed by the acclaimed*

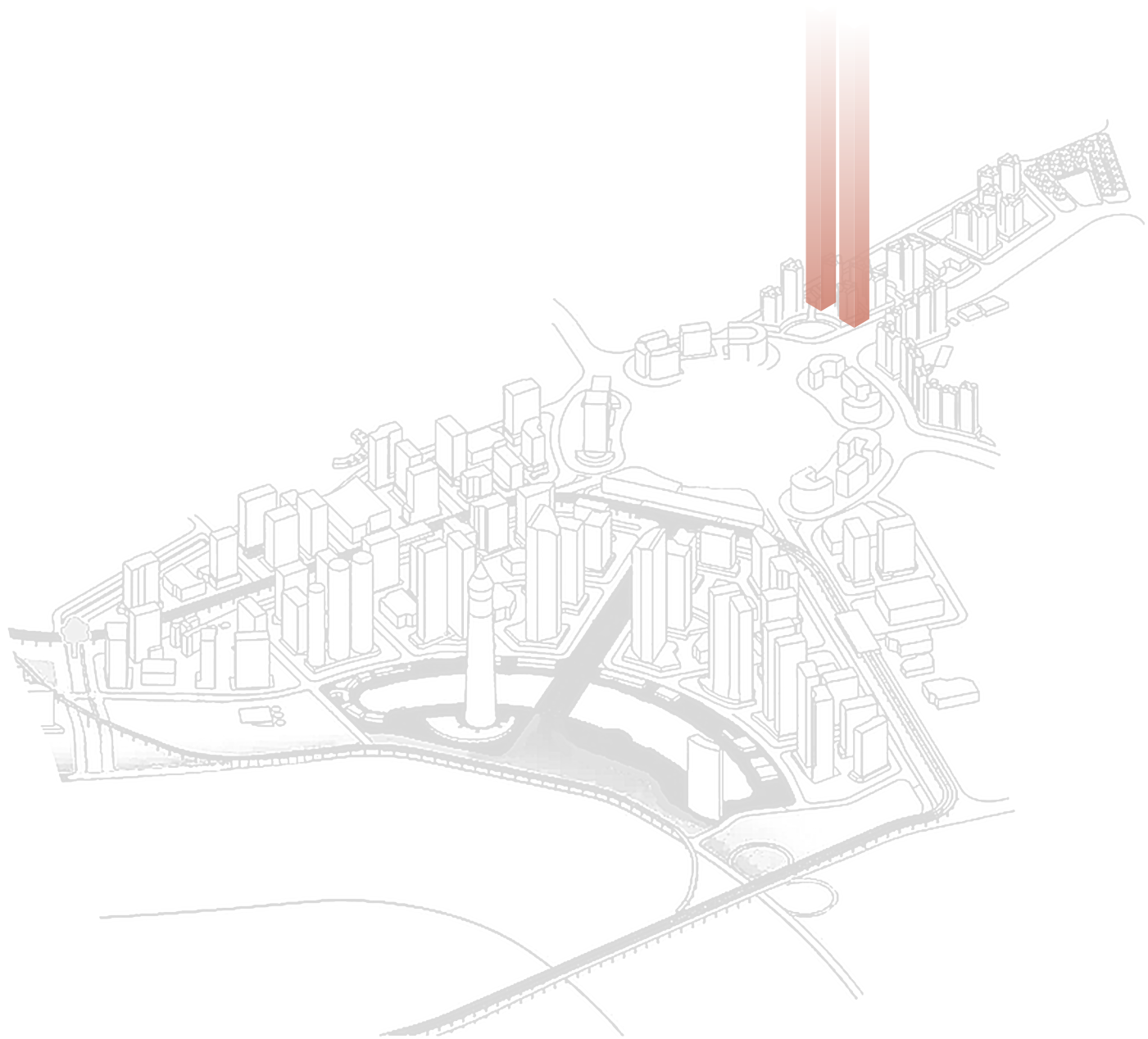
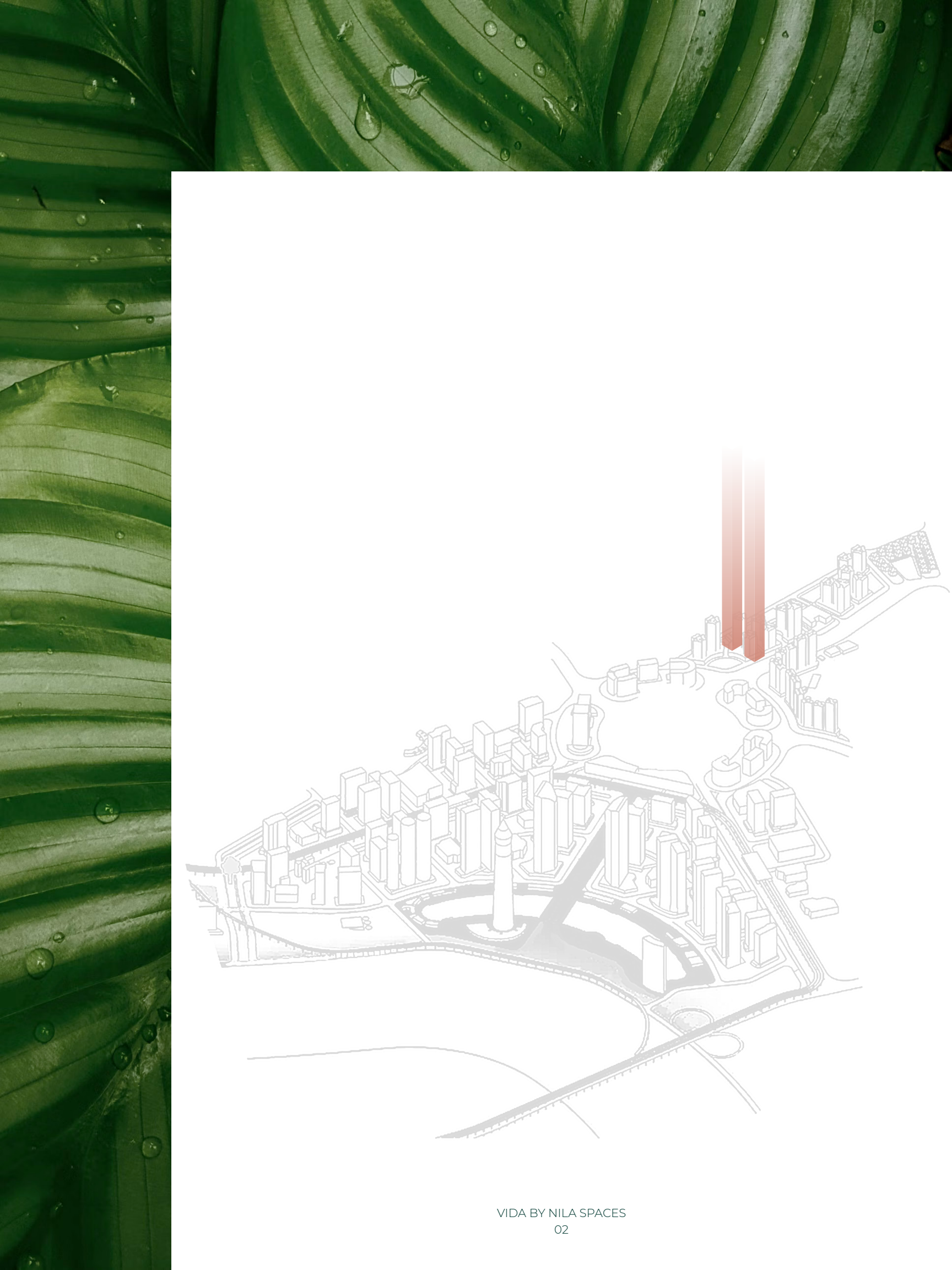
## **blocher partners india**

Our vision was to provide a landmark for contemporary living with aspects of sustainability and a green and colourful vibe. The towers will be an identity giving a great standing position in the urban context for this upcoming socio-economic quarter and the bespoke apartments will cater to the needs of the cosmopolitan inhabitants. What is most important for us is that the spaces will be not only highly functional and efficient but also happy, open, well-lit and take advantage of the amazing views that the location has to offer.

A colour was added to give a vibrancy in the dialogue between the elegant horizontal white lines and the natural greens growing and hanging over. This also gives a sense of recognition and visual connection to the users. The horizontal bands give a strong structure to the building with an elegant feel where planters are added and balconies pop out which also gives an additional advantage of shading of the outer wall of the apartments.

The development is a composition of 2 towers measuring 117m connected by 6 bridges. The vertical green which is integrated in the façade adds a positive vibe not only in the urban context to the building as a strong standing landmark, but also to the user with direct usage not only of the amazing views but also the greens which are wrapping this building. In each of the towers the ground and first floor are for common spaces and amenities, and floors above this are a mix of 1, 2 and 3 bedroom apartments for a vivid combination of singles, couples, and everyone can find something according to their needs.

The bridges between the buildings and the whole roof top terraces are valuable additional green spill out spaces made accessible to all users. The area of the green bridges will connect the two towers like a green joint thus providing a visual delight to the passers-by.



*A heartbeat from  
everything Gujaratis  
love about their city.*

GIFT CITY is the central pillar of the tri-city approach, located on the banks of the Sabarmati river between Ahmedabad and Gandhinagar, each 30 minutes away from one other. Ahmedabad boasts glorious history, Gandhinagar is the central hub of policy and decisions, and GIFT City is the main centre of the economy. Each city provides a distinct supportive ecosystem. You are only thirty minutes away from the past, present, and future.

20 Mins From Ahmedabad International Airport.

Along National Highway 48

Metro Connectivity To Ahmedabad

15 Mins From Bullet Train Terminus

Ultra-Modern Office spaces, Residential Apartments, Schools

A state-of-the-art certified TIER IV Green Data Centre

Proposed Hospital, Five-star Hotels, Business Club, various recreational amenities

Automated Waste Collection System (AWCS)

Zero-discharge city; drinkable water from any tap.

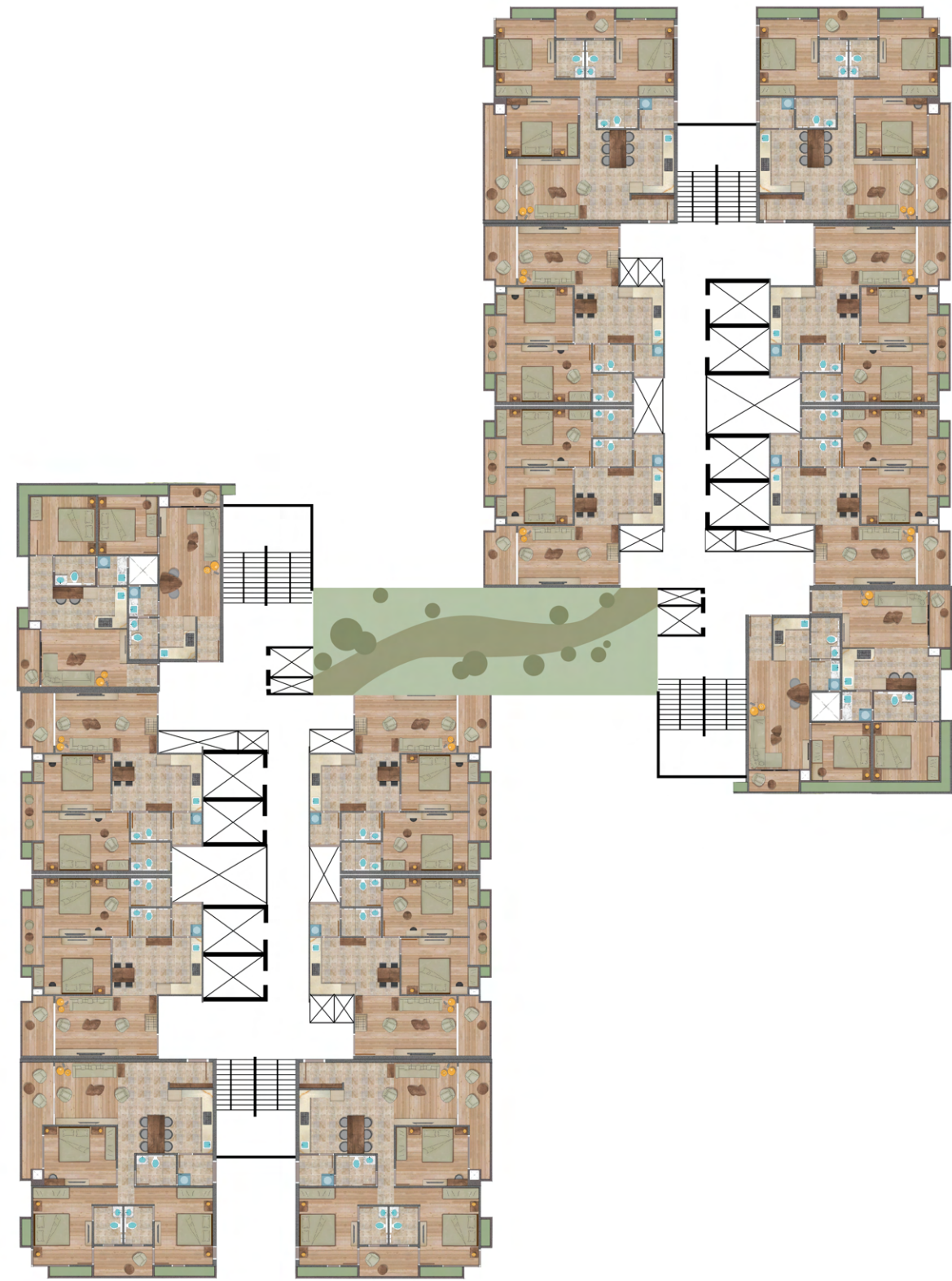
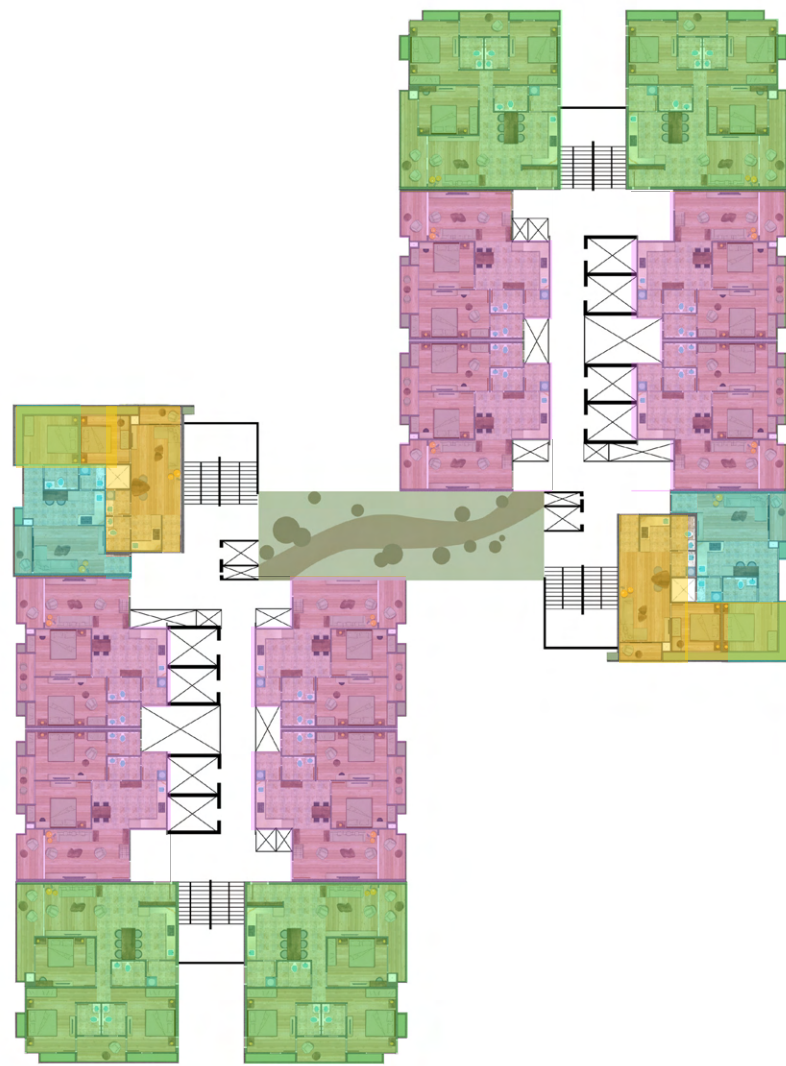
99.999% power reliability.

District Cooling System has been introduced for the first time in India for commercial use. The chilled water will be supplied till building level, and it will reduce energy and maintenance cost, and improve quality.

In the vicinity of GIFT City one can find Clubs, plethora of Hotels, Fine dining Restaurants, Theaters, Mega Malls, Supermarkets, Places of worships, Historic Temples, Park etc. Under-ground Utility Tunnel

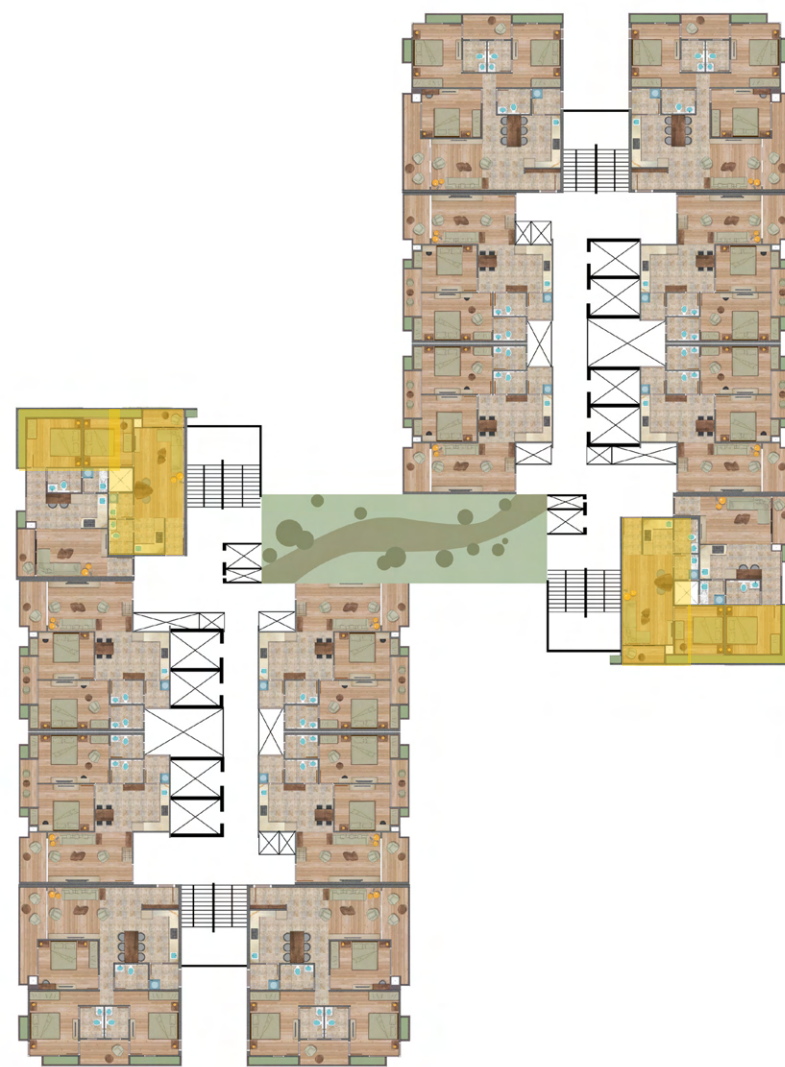
# CLUSTER

---



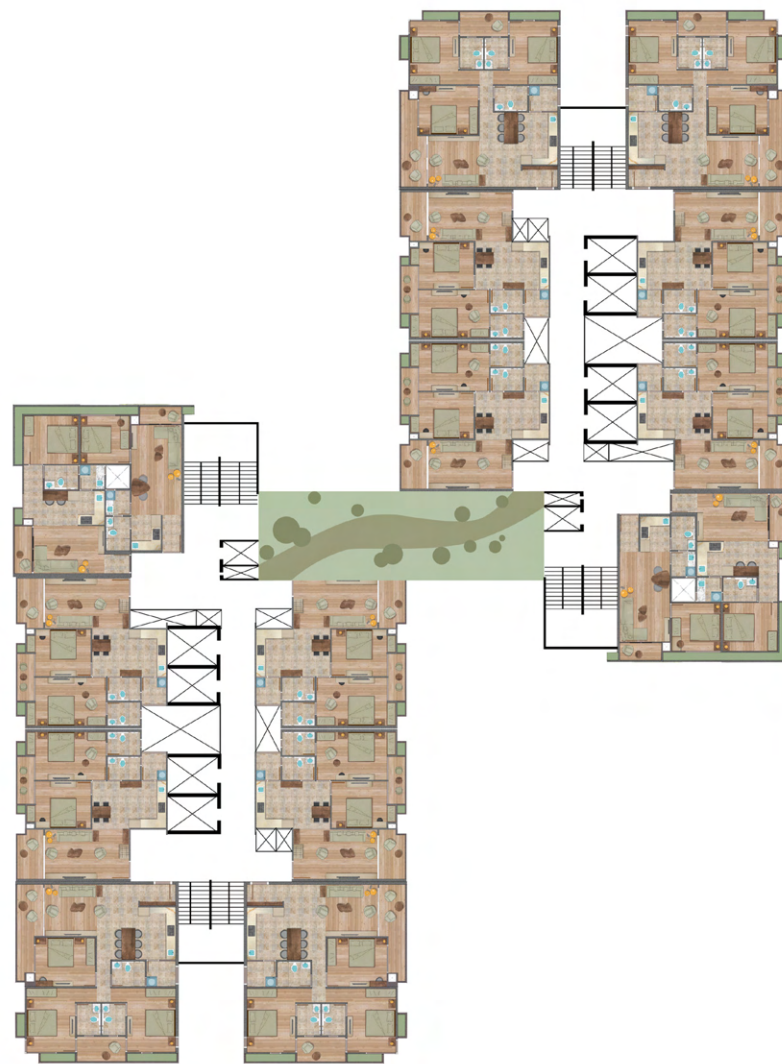
# STUDIO

RERA CARPET AREA 483 Sq.ft.



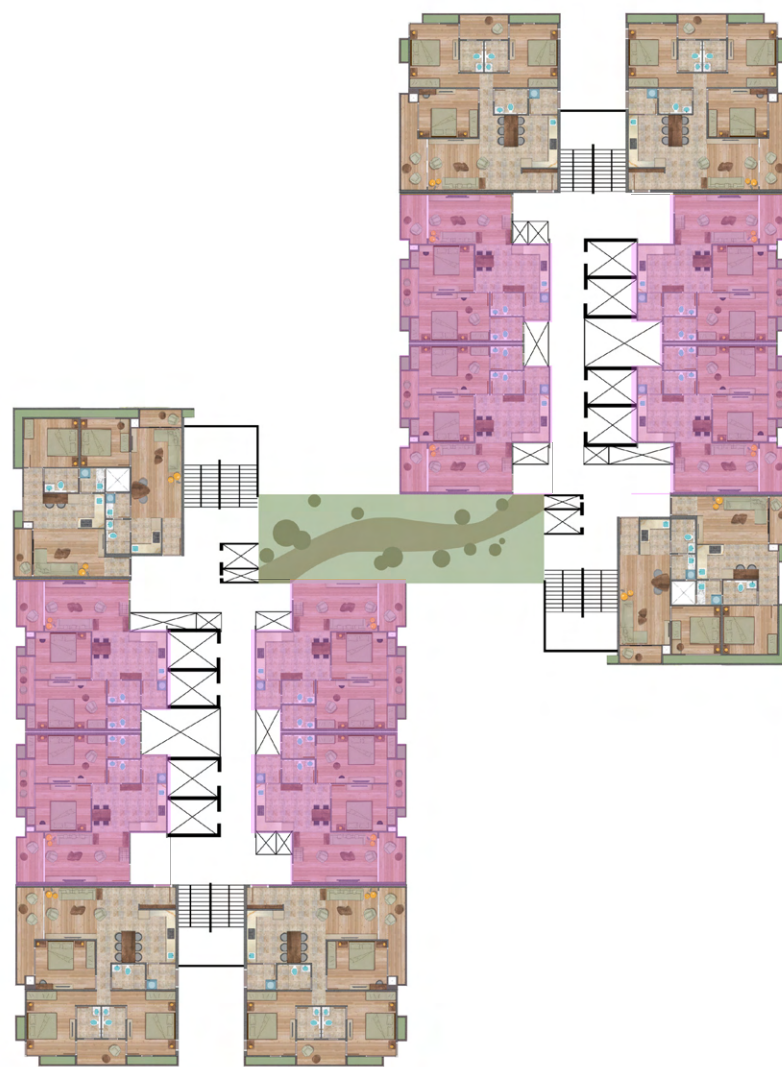
# 1BHK

RERA CARPET AREA 529 Sq.ft.



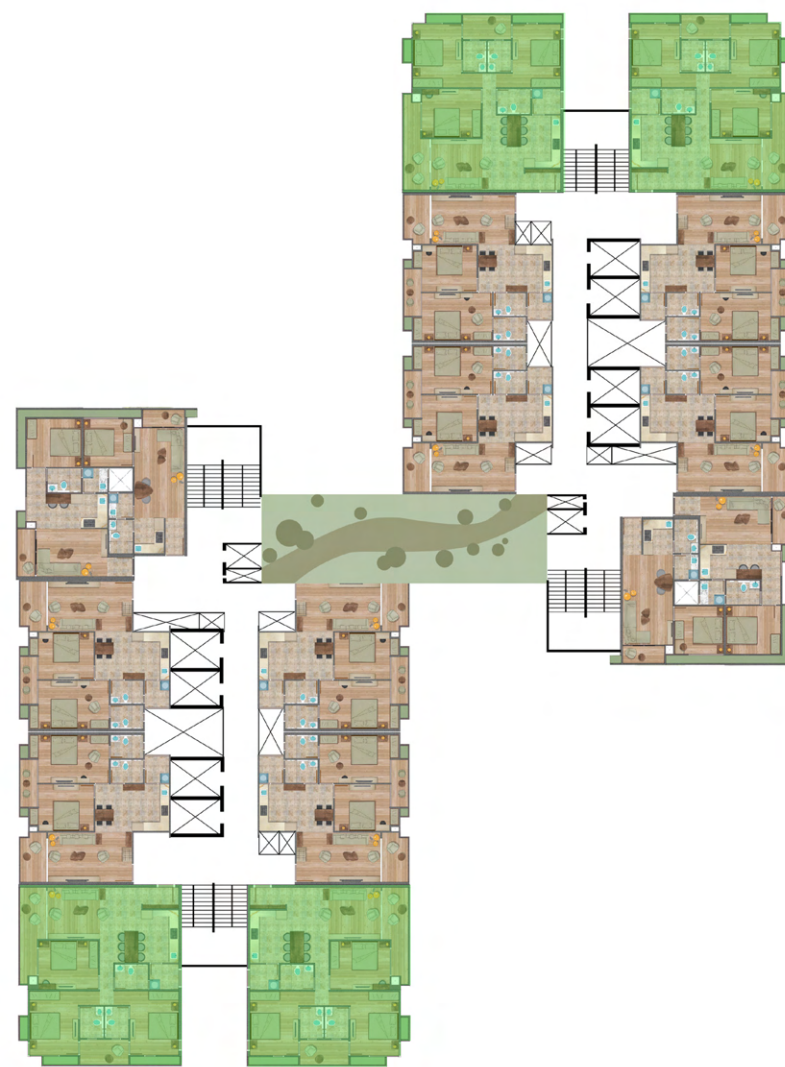
# 2BHK

RERA CARPET AREA 871 Sq.ft.



# 3BHK

RERA CARPET AREA 1180 Sq.ft.



GROUP CREDENTIALS

---

Prominent  
business group  
with vintage of  
**32+ years**

Satisfactory  
delivery of

**50+**  
**Projects**



Winner of various  
Real-estate related  
awards

Already delivered  
20,000+ homes + Currently  
constructing 10,000+  
homes at Group Level



Successful execution of

**5+ Mn sq ft**



Site Address

VIDA, Plot No. 46 J, Block No. 46, Opp. Petrol Pump,  
Gujarat International Finance Tec-City, Gandhinagar-382355.

Developer

**NILA SPACES LIMITED**

1st Floor, Sambhaav House, Opp: Chief Justices'  
Bungalow, Bodakdev, Ahmedabad - 380015.

☎ 1800 4199 202 ✉ info@nilaspaces.com

🌐 www.nilaspaces.com

CIN:L45100GJ2000PLC083204

Associate Architect



MEPF & BIM



Structural Consultant



RERA APPROVED: PR/GJ/GANDHINAGAR/GANDHINAGAR/  
GIFT Urban Development Authority/RN209AA10109/011022

## DISCLAIMER

This document is conceptual and not a legal offering by the Company for advertising and is to be used for general information only. Any interested party should verify all the information including designs, plans, specifications, facilities, features, payment schedules, terms of sales etc independently with the Company prior to concluding any decision for buying in any of the project. The user of the Brochure confirms that he / she has not solely relied on this information for making any booking/purchase in any project of the Company. The visuals and information contained herein marked as "artistic impression" are being indicative in nature and are for general information purposes only. The visuals contained marked as "generic image and other visuals /image /photographs are general images and do not have any correlation with the project. The imagery used on the brochures may not represent actuals or may be indicative of style only. Photographs of interiors, space surrounding views and location may not represent actuals or may have been digitally enhanced or altered. These photographs may not represent actuals or may be indicative only. Computer generated images, walkthroughs and render images are the artist's impression and are an indicative of the actual designs. No information given in this brochure creates a warranty or expand the scope of any warranty that cannot be disclaimed under the applicable laws. The information in this brochure is presented as general information and no representation or warranty is expressly or impliedly given as to its accuracy. While enough care is taken by the Company to ensure that information in the brochure are up to date, accurate and correct, the readers / users are requested to make an independent enquiry with the Company before relying upon the same. Nothing in the brochure should be misconstrued as advertising, marketing, booking, selling or an offer for sale or invitation to purchase a unit in any project by the Company. The Company is not responsible for the consequences of any action taken by the viewer relying on such material information on this brochure without independently verifying with the Company.